

WAFER TRANSFER SERIES 150mm

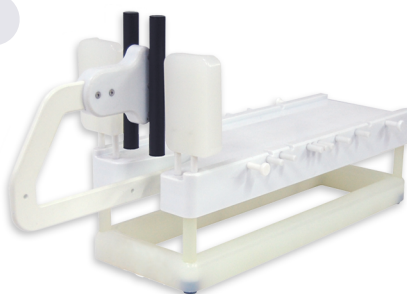
AUTOMATED OR MANUAL

**AWT
150**

**MWT
150**

100/125MM WAFER HANDLING
150MM WAFER HANDLING
200MM WAFER HANDLING
VACUUM HANDLING SYSTEMS
RETICLE HANDLING

WAFER CARRIERS
CARRIER HANDLES



DESCRIPTION

The Horizontal Transfer Machines perform batch transfer of wafers between Semi-Standard carriers.

A series of guide rods on the transfer platform ensure carriers are in the correct position for transfer. The double contact transfer arm avoids wafer rotation during transfer.

Equipment provides true ESD protection for wafers and carriers.

The AWT150 has several safety sensors which prevent transfer unless carriers are positioned correctly and will stop transfer if a carrier is removed early or is displaced. Over-current protection on the transfer arm will halt the transfer to avoid damage to wafers.

The MWT150 has a self returning transfer arm.

FACILITY REQUIREMENTS

100/240V AC – 50/60 Hz – 1.2 A

SPECIFICATIONS (MM)

AWT150:	L 545 x W 172 x H 248mm
MWT150:	L 534 x W 212 x H 248mm



RECIF TECHNOLOGY

This tool has been designed under license from Recif Technologies using the same design principles, materials and kinematics as were used in the original equipment and wafer fabs around the world.

SUPPLIERS TO THE SEMICONDUCTOR INDUSTRY

www.emutech.com info@emutech.com +44 1935 813313

WAFER TRANSFER SERIES 200mm

AUTOMATED OR MANUAL

**AWT
200**

**MWT
200**



DESCRIPTION

The Horizontal Transfer Machines perform batch transfer of wafers between Semi-Standard carriers.

A series of guide rods on the transfer platform ensure carriers are in the correct position for transfer. The double contact transfer arm avoids wafer rotation during transfer.

Equipment provides true ESD protection for wafers and carriers.

The AWT200 has several safety sensors which prevent transfer unless carriers are positioned correctly and will stop transfer if a carrier is removed early or is displaced. Over-current protection on the transfer arm will halt the transfer to avoid damage to wafers.

The MWT200 has a self returning transfer arm.



FACILITY REQUIREMENTS

100/240V AC – 50/60 Hz – 1.2 A

SPECIFICATIONS (MM)

AWT200: L 642 x W 230 x H 290mm

MWT200: L 642 x W 230 x H 290mm



RECIF TECHNOLOGY

This tool has been designed under license from Recif Technologies using the same design principles, materials and kinematics as were used in the original equipment and wafer fabs around the world.

SUPPLIERS TO THE SEMICONDUCTOR INDUSTRY

www.emutech.com info@emutech.com +44 1935 813313